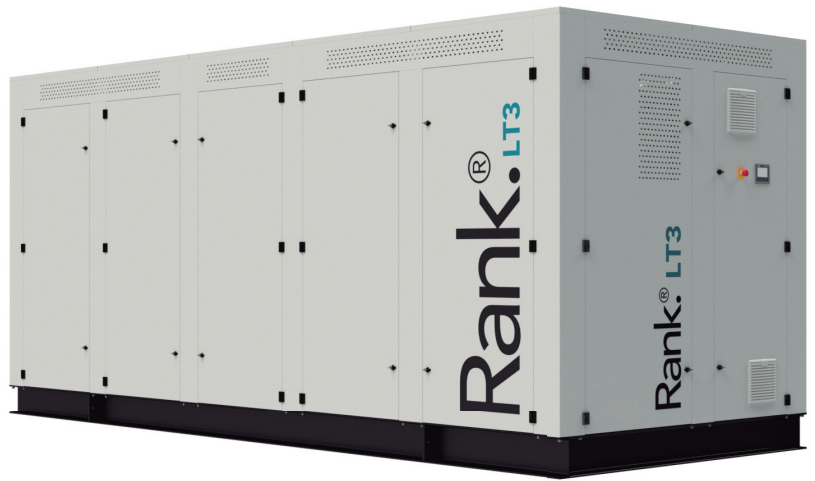


Rank® LT3

Product description

In the case there are heat sources with very low temperatures, above 90 °C, the Rank® LT3 machine allow their use through electric generation, with an electric generation up to 85 kWe

The electrical generation is complemented with the possibility of using the heat produced in the condenser at temperatures up to 50 °C.



A Rank® machine for every need

Whatever your need is, we have a Rank® machine that can be adapted to it, through a variety of products that cover a wide range of thermal and power applications.

LT1	MT1	HT1	HTC1	
LT2	MT2	HT2	HTC2	
LT3	MT3	HT3	HTC3	
90°C	120°C	150°C	180°C	210°C

What is Rank®?

The Rank® equipment allows the production of electrical energy and useful heat using a low-temperature heat source, with the associated economic and environmental benefits.



Rank® LT3

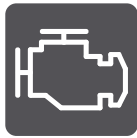
Applications

Among the main applications of the Rank® ORC machines, we highlight the waste heat recovery and the utilisation of renewable heat sources, with a special interest in cogeneration and trigeneration systems.

Heat sources



Industrial Waste Heat



Engines



Biomass



Solar CHP



Waste



Geothermal

Heat sinks



Cold Production



Heating

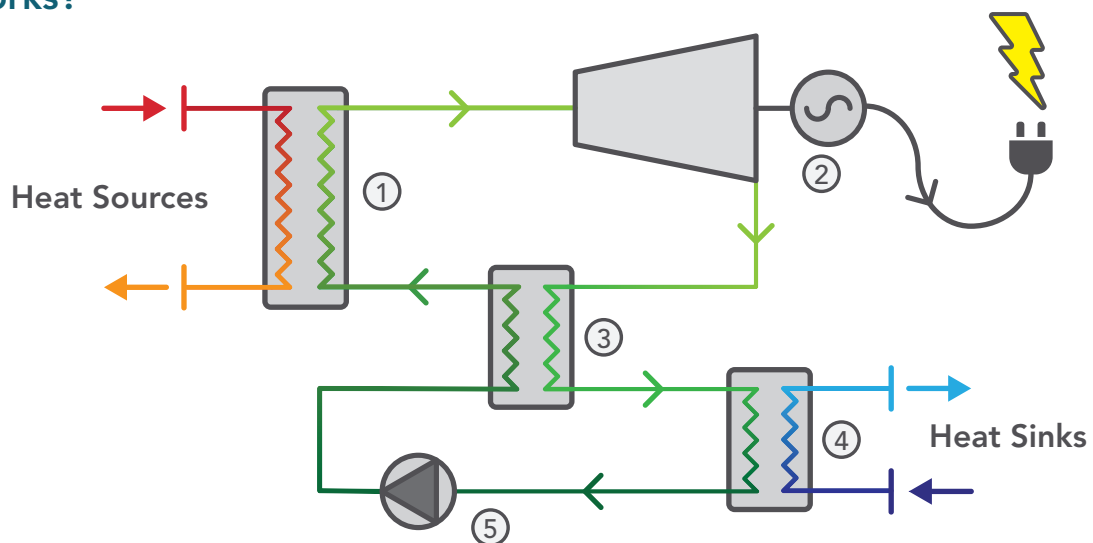


Industrial Processes



Drying

How it works?



- ① Evaporator** A heat exchanger that provides heat to the high-pressure working fluid and passes from subcooled liquid to superheated vapor (in the form of water or thermal oil).
- ② Turbine** The expansion of the superheated vapor is used to generate clean electricity.
- ③ Regenerator** To increase the efficiency of the system, the expanded working fluid is used to preheat the high-pressure liquid at the inlet of the evaporator.
- ④ Condenser** It produces useful heat (in the form of water) from the condensation of the working fluid at low pressure.
- ⑤ Pump** The pressure of the working fluid is increased, and the ORC cycle is completed.

Rank® LT3

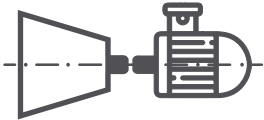
Rank® Technology

The Rank® equipment is composed of high quality, robust and efficient components, which offer the following advantages and benefits to our customers.



Rank® low rpm turbine

Operation at low revolutions reduces the noise level, lengthens the service life and improves the reliability.



Rank® direct drive

Direct drive avoids the use of gears or pulleys, minimising the maintenance and increasing electrical efficiency.



Zero leaks

Our hermetic components eliminate the leakage of the working fluid, reducing maintenance costs and downtime and being more environmentally friendly.



Magnetic transmission

Magnetic transmission to ensure the tightness and to reduce the possibility of leakage.



Rank® easy-connect

Electronics-free connection to the electricity grid at the required electrical quality conditions.



Flexible operation

Modular machines that can operate under a wide range of temperature and flow inlet and outlet conditions.



Digitalisation through the Rank® control system

Our machines operate without the need for the human interface through an automatic, efficient managing system.



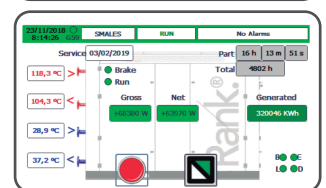
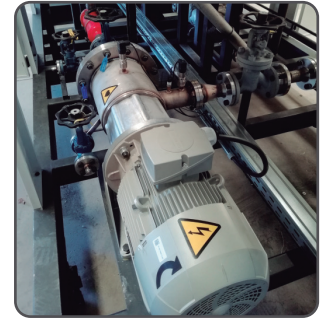
Security

It complies with all safety regulations and minimises the risk of accidents.



Rank® service

Real-time remote monitoring and predictive control of the machines, and automatically generated reports.









Safety Regulations and Standards

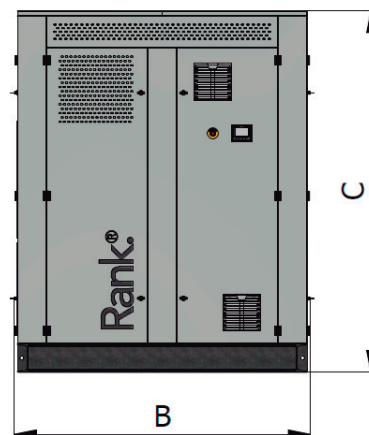
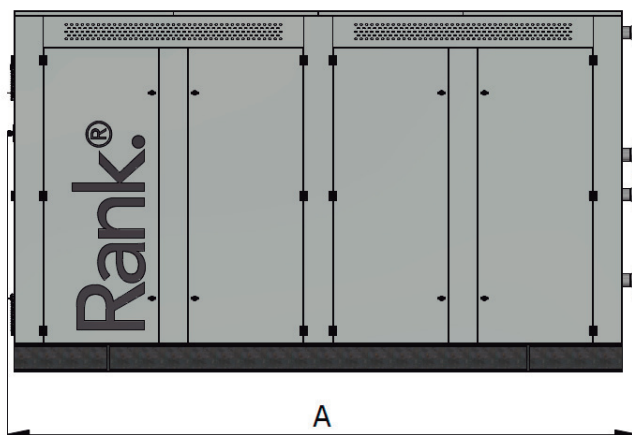
- Low voltage Directive
- Machinery Directive
- Electromagnetic Compatibility Directive
- Pressurized Equipment Directive
- ENA ER G59/3
- ASME B31.1 – Power Piping Code, Mechanical
- ASME B31.3 – Process Piping Code
- ASME Boiler and Pressure Vessel Code Section VIII
- UL 508A- Control Panel Wiring
- EN/ISO 3744:2010

Rank.® LT3

Technical Data

		Heat source	Heat transfer fluid	Water	-
			Inlet temperature	90-120	°C
			Outlet temperature	80-110	°C
			Volumetric flow rate	78	
			Thermal power	500-1.000	kWt
			Connections diameter	DN150 PN16	-
			Pressure drop	125	kPa
			Heat transfer fluid inner volume	120	L
					Useful heat
Inlet temperature	20-40	°C			
Outlet temperature	30-50	°C			
Volumetric flow rate	63				
Thermal power	400-800	kWt			
Connections diameter	DN150 PN16	-			
Pressure drop	125	kPa			
Heat transfer fluid inner volume	120	L			
		Electricity			
			Net power	30-80	kWe
			Voltage	3 x 400	V
			Frequency	50	Hz
			Intensity	127	A
			Data Connection	RJ45	-

Dimensions



A = 5.800 mm
 B = 2.250 mm
 C = 2.500 mm
 Weight 8.000 Kg

Rank.® Pol. Ind. La Mezquita,
 Parcela 412 - nave B, 12600 La Vall d'Uixó,
 (Castelló) Spain
 Apartado de Correos 115,
 t. +34 964 696 859
 info@rankweb.es
 www.rankweb.es

Although our staff has made every effort possible to ensure the most accurate data and close to the final solution, these should be considered as indicative and not binding.